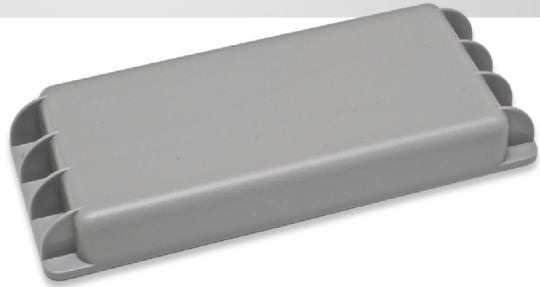


AT

Cellular-Based GPS Asset Tracking

The Track What Matters Asset Tracker (AT) is a flexible tracking device perfect for areas where GSM coverage is established and accessible; this includes most of the globe!

As with the STU, all of the AT's data is stored and presented in Track What Matters' cloud-based solution complete with 1 year of history retained online.



The Asset Tracker, because of its ability to use the near-global GSM network, provides a very affordable tracking option. The AT excels beyond the Satellite Tracking Unit (STU) is when it is under cover.

The AT device, by default, locates using the GPS satellite network. However, if locating via GPS is impossible due to the device being under cover, the AT is able to produce locations based on cellular data.

Casing	Waterproof – IP68 rated
Temperature Range	-20°C to 85°C
Dimensions	6.75" x 2.75" x .75"
Battery Capability	Reports up to 800 location messages
External Power	Not available
Mounting Options	Tape, Screw, Mounting Sled
Communication Method	GSM cellular networks
Primary Location Method	GPS – Accurate to 3 meters or better
Secondary Location Method	Cellular Data – Accuracy varies
External Sensors	Not Available



🌐 For more detailed information, including pictures, go to:
www.trackwhatmatters.com